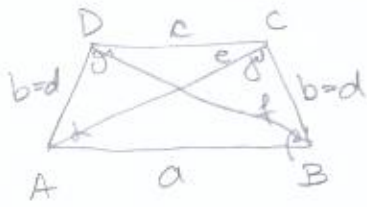


ENAKO KRAKI TRAPEZ

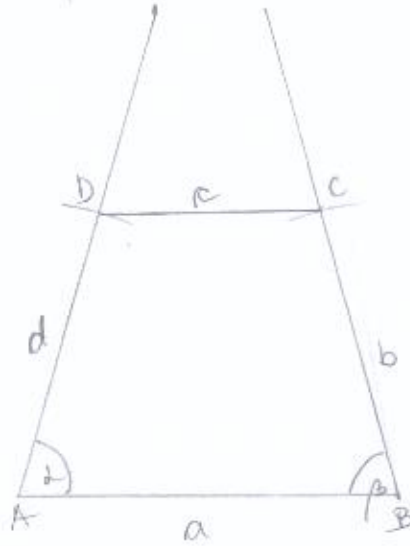


- LASTNOSTI
- $a \parallel c$
 - $b = d$
 - $\alpha = \beta$
 - $e = f$

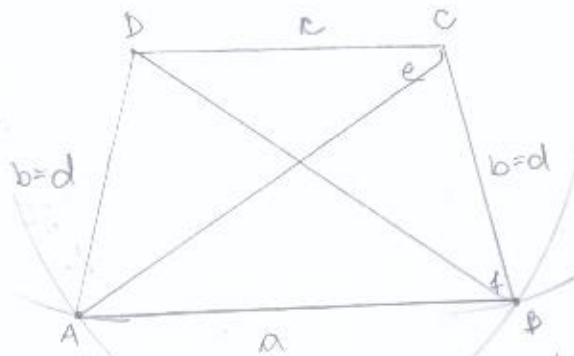
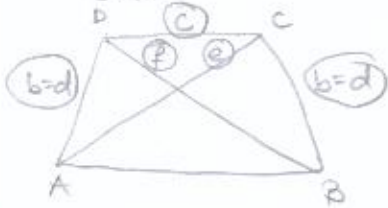
VAJA

übeniz, str. 144, nal. 4.

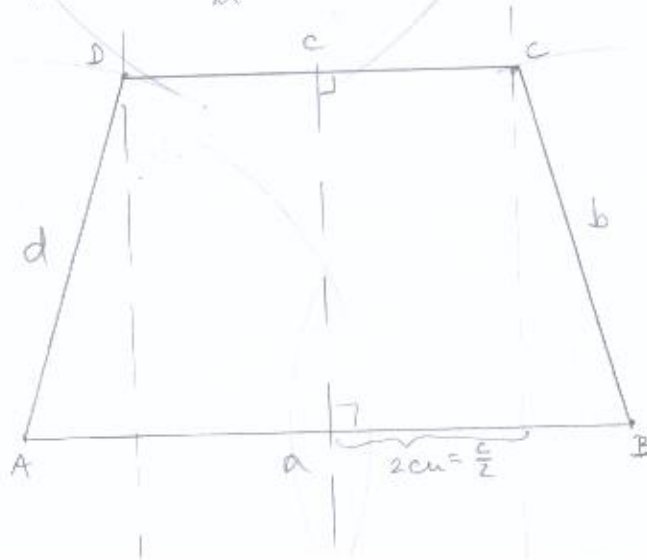
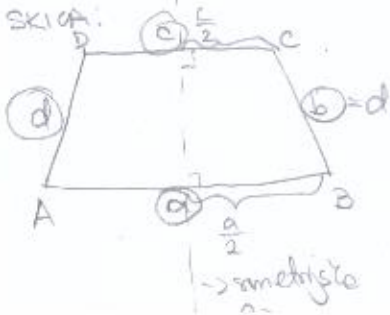
- a.) $a = 5,5 \text{ cm}$
 $d = 4 \text{ cm} = b$
 $\beta = 75^\circ = \alpha$
 SKICA:



- b.) $c = 4 \text{ cm}$
 $f = 6 \text{ cm} = e$
 $b = 3,5 \text{ cm} = d$
 SKICA:



- c.) $a = 8 \text{ cm}$
 $b = 5 \text{ cm} = d$
 $c = 4 \text{ cm}$
 SKICA:

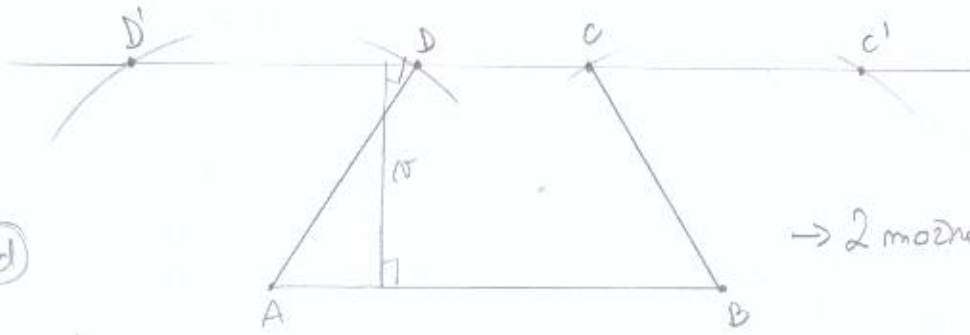
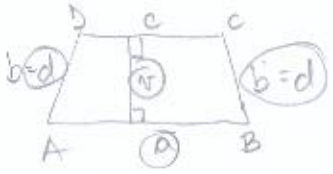


c.) $a = 6\text{cm}$

$d = 3,5\text{cm} = b$

$N = 3\text{cm}$

SKICA:



→ 2 možnosti

d.) $c = 2\text{cm}$

$\alpha = 150^\circ = \gamma$

$e = 8\text{cm} = f$

SKICA:

